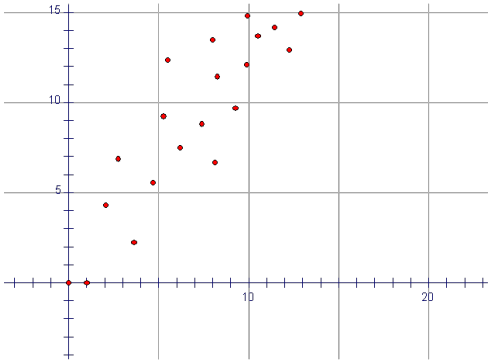


2-5 Modeling Real World Data

Scatter plot--set of data graphed as ordered pairs

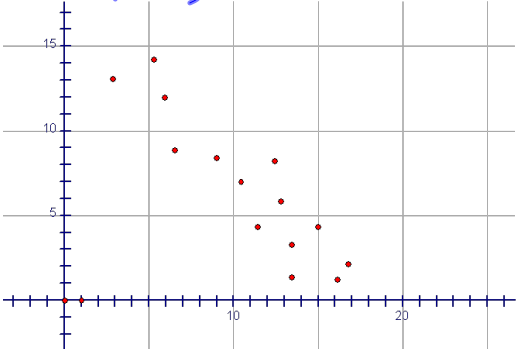
Positive Correlation



Oct 4-11:30 AM

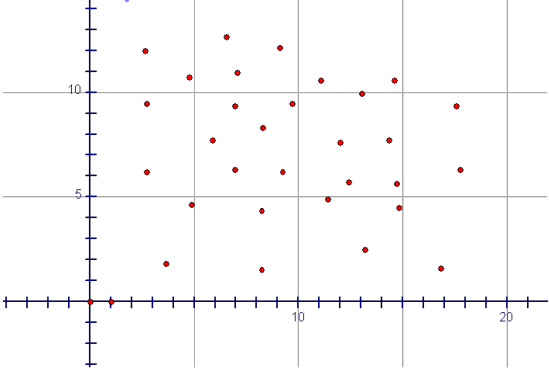
Oct 4-11:32 AM

Negative Correlation



Oct 4-11:32 AM

No Correlation



Oct 4-11:32 AM

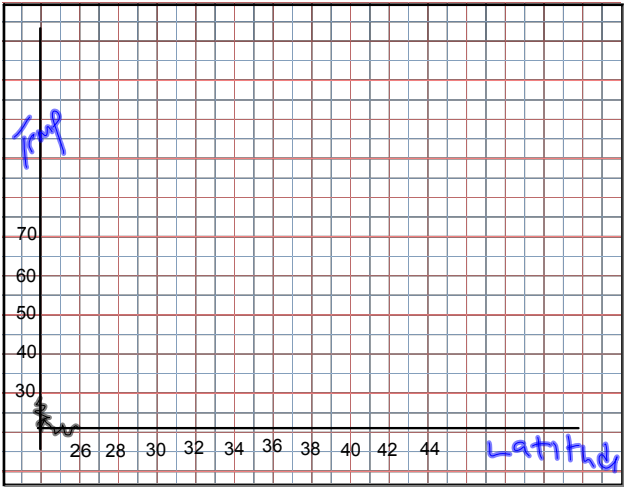
Line of Best Fit--line that closely approximates the data

- an equation that allows you to make a prediction

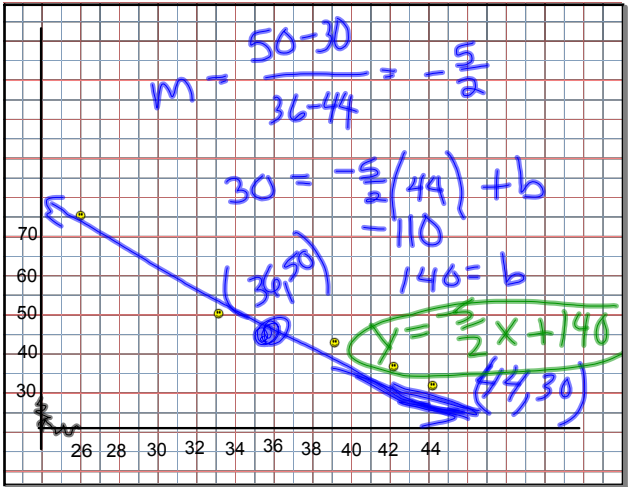
City	North Latitude	Maximum Normal Temp. For January (in °F)
Miami, FL	26°	75
Charleston, SC	33°	50
Washington, D.C.	39°	43
Boston, MA	42°	36
Portland, ME	44°	31

Oct 4-11:34 AM

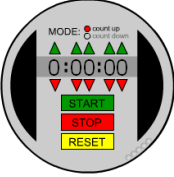
Oct 4-11:35 AM



Oct 4-11:38 AM



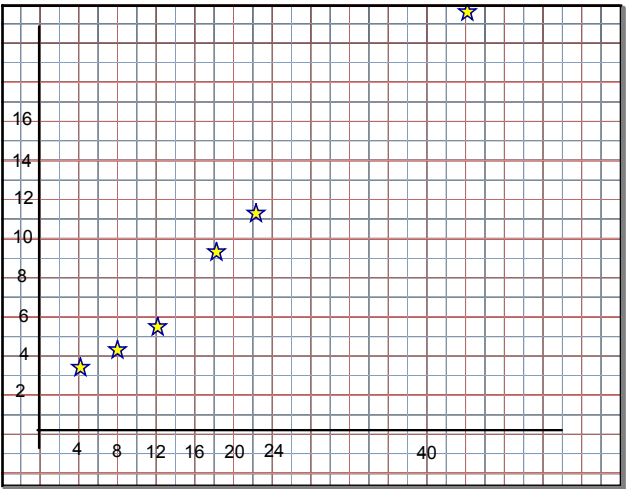
Oct 4-11:38 AM



The Wave

# of Students	Duration
4	3.88
8	4.23
12	5.8
18	9.44
22	11.68
44	23.19

Oct 4-11:39 AM



Oct 4-11:38 AM

The following is data from the Storm Prediction Center in Norman, Oklahoma. It represents the number of tornadoes in the U. S. in the given year.

Year	1950	1955	1960	1965	1970	1975	1980	1985	1990	1995
# of tornadoes	201	593	616	897	654	919	866	684	1133	1234

Oct 4-11:41 AM

HW
p83-85 #s 1, 4-6, 8

Oct 4-11:43 AM